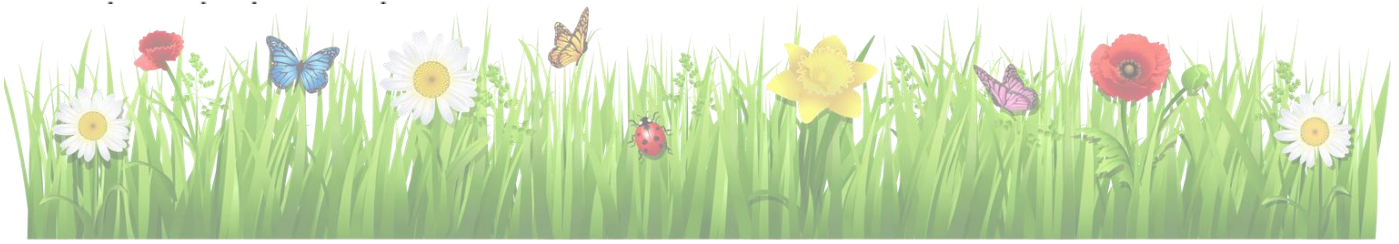


Year 1 Curriculum Newsletter Spring 1



Welcome back Year 1!

We hope you have all had an excellent Christmas break. As a year group, the progress we have seen in the children since September has been incredible and we are exceptionally proud of the children in our year group. As we begin the next term in our learning journey, we would like to remind you that Wellington Community Primary School is here to help your child thrive and ensure every minute of their school day is meaningful.

Curriculum Overview

Attached to this curriculum letter, you will find a curriculum overview of the learning themes and topics we will be covering this half term. We hope that you find this informative and detailed. In class, children are now in full formal learning and have been showing great success with this. Year 1 students have an extra break time in the afternoon.



Online Safety

A reminder that children should be supervised when using the internet. There are filters available and child-friendly search engines such as 'Google Kids'. Children are not permitted to use social media such as Facebook, Instagram or TikTok until they are aged 13+. Additionally, they should not be accessing any games or television that is beyond their age range.

<https://www.bbc.com/ownit/take-control/understanding-age-ratings>



School Timings



Just a quick reminder that our classroom doors will open at **8:35am** and school finishes at **3:15pm**. If you arrive **after 8:50am**, please take your child to the school office first - thank you. If your child has been invited to attend a booster group, we expect to see them on their group day at 8:20am.

Attendance and Punctuality

Children need to be in school **every day** and **on time**. Face-to-face education is important in helping pupils to fulfil their potential. During school time, pupils should be in class with their teachers and peers and enjoying all the benefits that this brings.

Physical Education and Games

PE will be on a **Tuesday** and **Thursday** this term. P.E kits should be brought in on a **Tuesday** and will be sent home on **Thursday** to be washed. Please label all items of clothing.

As the weather is still cold and this half term's PE lessons are outdoors, tracksuits bottoms and your child's school jumper are suitable for outdoor sessions. Appropriate footwear is essential. Please make sure children do not wear jewellery to school on these days and that they have a hair band/bobble to tie their hair back, for health and safety purposes.



Phonics

A key focus in Year 1 is ensuring all children are able to recognise, say and blend sounds. We teach this through the Read Write Inc programme. It is recommended you practise sounds with your child at home as well as reading their phonics books with them a minimum of **3x a week**. All home reading should be recorded in your child's reading record. You can refer to the videos previously emailed to support this as well as attending the January Phonics Workshop.



Diary Dates

These may change or be added to throughout the course of the term.

Event	Date
Year 1 Unfair Olympics Parent vs Child	Friday 14 th February 2025
Last day of this half term	Friday 14 th February 2025

As always, your continued support is very much appreciated. If you do wish to discuss anything with us, please do contact the school office or arrange a meeting after school.

Yours faithfully,

Miss Strawn
Owl Class Teacher



Miss K Williams
Squirrel Class Teacher



Key Stage 1 Assemblies

Monday (Fortnightly)	Head teacher/Deputy Head teacher's Assembly
Tuesday	Faith Assembly
Wednesday	Singing Assembly
Thursday	Class Assembly
Friday	Celebration Assembly

Curriculum Overview

Subject		Spring 1 (This half term)	Spring 2 (Next half term)
Spoken and Written Word	Reading	RWINC Programme	RWINC Programme
	Writing	How to catch a star & Erol's Enormous Turnip	Somebody swallowed Stanley & Clem and Crab
STEM	Maths	Number and Place Value, Addition and Subtraction, Comparison of quantities and part - whole relationships.	Number and Place Value, Addition and Subtraction, Comparison of quantities and part - whole relationships.
	Science	Habitats	Plants
	Computing	Online Safety	Creating media
	Design Technology	Junk Model Robots	N/A
Physical Well-being	PE	Hit, catch, run 1 Send & return 1	Hit, catch, run 2 Send & return 2
Creative & Performance Arts	Art	Orla Kiely - Print	N/A
	Music	As cold as Ice	The old castle
Emotional Wellbeing	RE	Belonging	Welcoming
	PSHE	Keeping Safe	My rights and respect
Humanities	History	Explorers in Space	N/A
	Geography	N/A	Where is our local area?